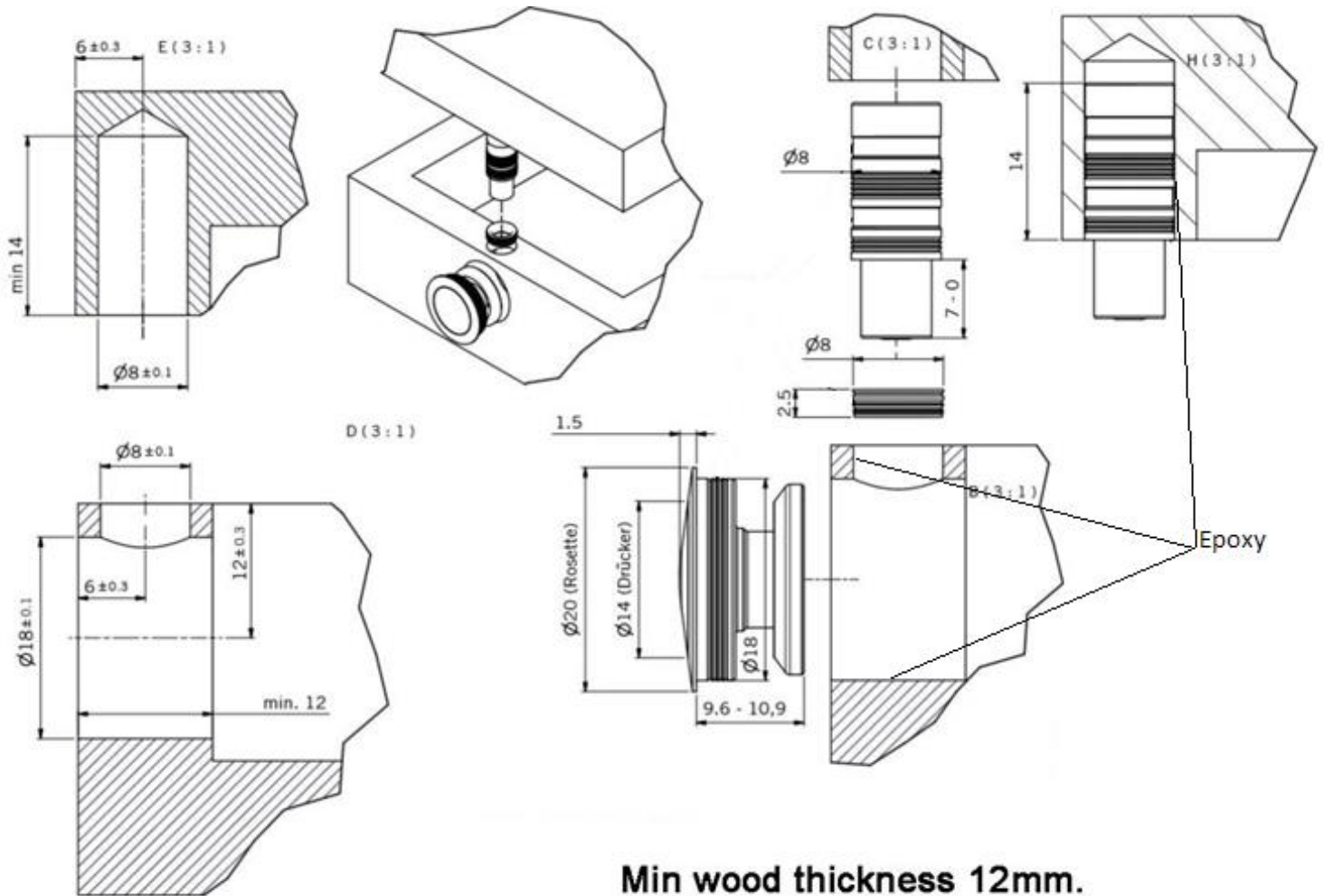


Precision Spring Button Catch – Fitting Instructions

Please note - Minimum wood thickness required is 12mm

Tools needed

- Drill press
- Pencil
- Ruler
- Drill Bits - 18mm, 10mm, 8mm and 5.5mm



Min wood thickness 12mm.

Once the box is hinged ensure that the front and sides are aligned. Mark a centre line down the lid and base. Remove the hinges and carry the line onto the inner lips.

Cut an mdf fence for your drill press table which is longer than your box and a minimum of 60mm high, like the drawing below.

Mark a centre line on your fence and fit your 10mm bit, align the centre of the bit to the centre line of the fence and clamp it in place.

Make a few test cuts using scrap until the centre of the hole is exactly 6mm away from the front edge. Use callipers to check the measurement. Being precise at this stage is essential. Place your lid on the drill table and add some scrap MDF to bring the edge of the lid to the top edge of the fence. Align the centre line on your lid to the centre line of the fence and clamp the lid to the fence, fit a 10mm drill bit and drill hole A 16mm deep, check this depth with callipers but best to be slighter deeper (16.20mm) as the spring-loaded part can be shimmed up to the exact height later on.

Remove the lid and place the lower part of your box on the table and align the centre marks up - clamp in place. Fit your 5.5mm drill bit and drill to a depth of 12mm, remove drill and fit your 8mm drill and without changing your setup drill the same hole to a depth of 1.6mm, test fit the collar and make sure it either sits perfectly flush or just slightly below the surface!!

You are now going to drill the front of your box so unclamp your box and fit your 18mm drill, making a few test cuts adjust the fence until the centre of the drill is 12mm from front edge, align the centre line of your lower box to the centre of your drill bit and clamp in place, drill to a depth of 10mm and your done.

Test fit.

Fit your hinges to your box and, while leaving the cap to one side, carefully insert the lid mechanism. On the lower part of the box assemble the spring, button and collar and push into place. While holding this in position, close the lid and the mechanism should engage. If it does not, try adding masking tape to the bottom until it gives a solid connection.

Add a very small amount of 30-minute epoxy to the front collar hole and around the inner rim of the cap mortise. Add the front assembly first and then push the top cap in place, ensuring it sits in flush or just slightly below the surface, clamp front in place until epoxy has cured. Once the epoxy is dry, remove the clamp from the front. Then double check your closure works before gluing in the lid mechanism, once happy add a small amount of epoxy to the drilled cavity and push in place.

Any queries please contact us on
+44 028 90 836 987
info@fineboxhardware.com

